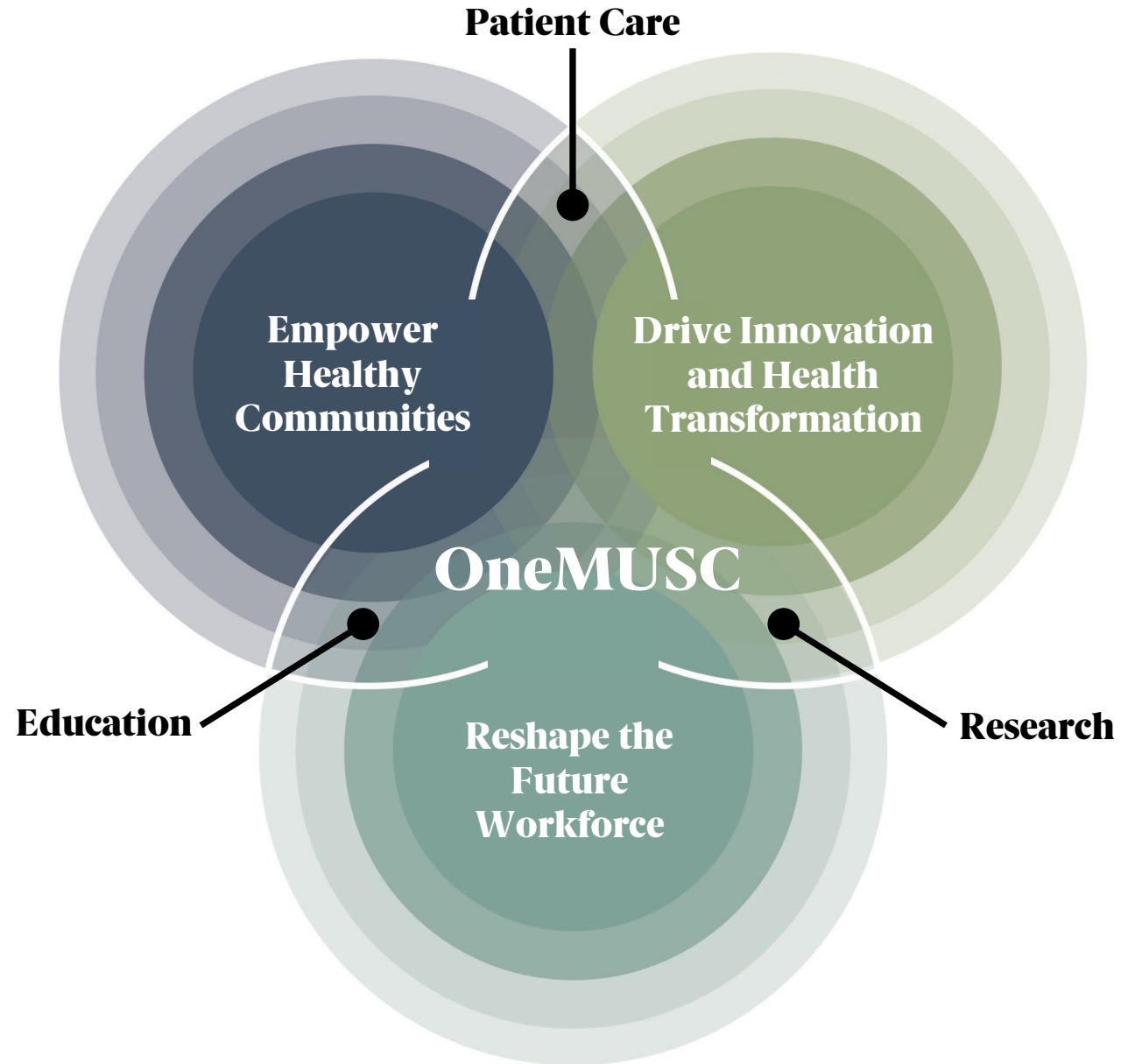


MUSC Downtown Charleston Campus Master Plan



Advancing the Strategic Plan —

Building on the 2020 Strategic Mission to “change what’s possible” through Innovation, Impact and Influence, the OneMUSC Strategic Plan has identified three new focus areas to guide the enterprise forward.



Strategic Priorities —

Align Space and Facilities
with the OneMUSC Mission

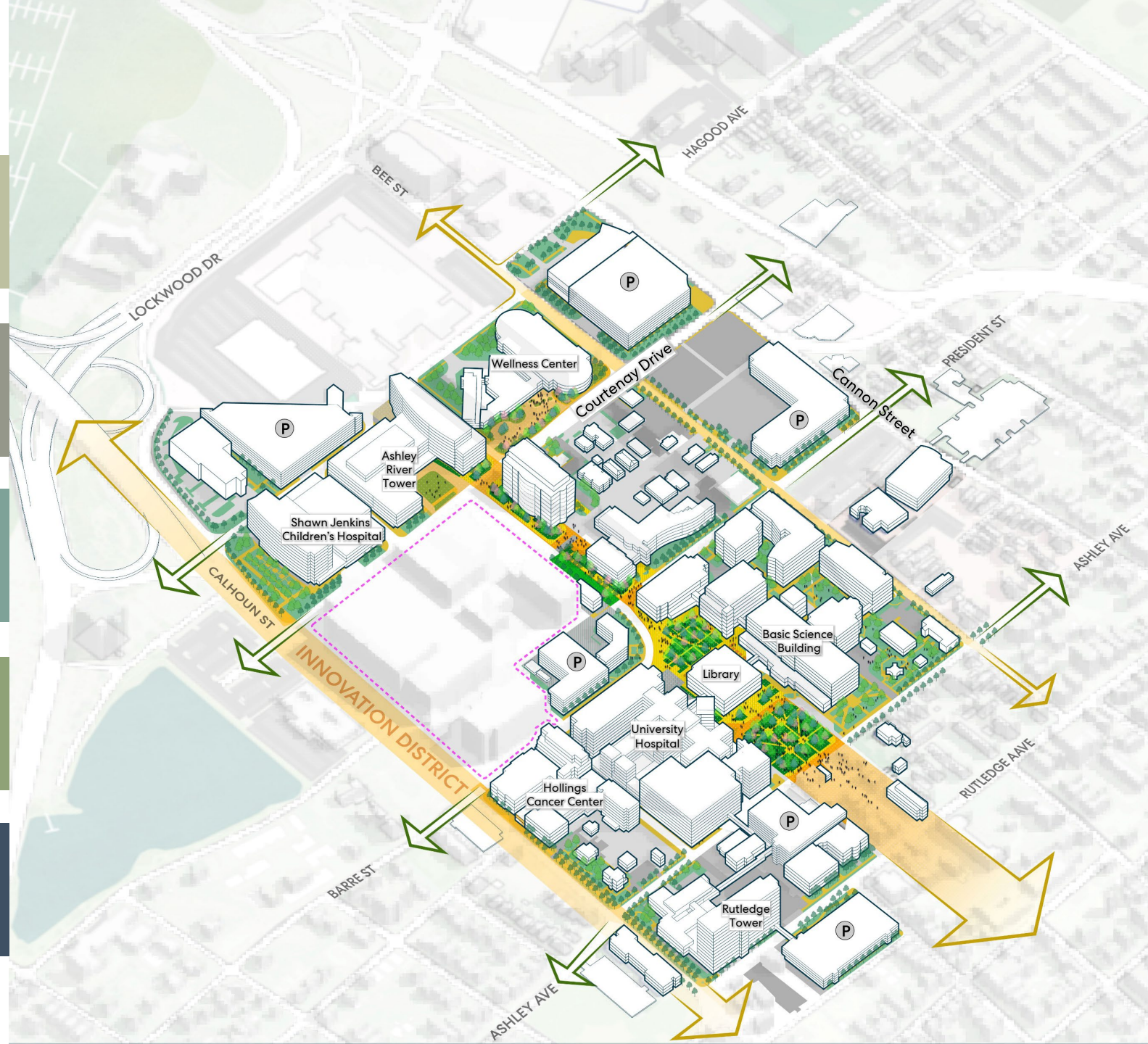
Strengthen Research
and Care Adjacencies

Plan for Resilience,
Parking, and Access

Vision for the Innovation
District as MUSC's Front Door

Shape Regional Growth
with Purpose

MUSC Downtown Charleston Master Plan



Campus Gateway -Horseshoe



**Shaded and Welcoming
Campus Gateway**

Interpretive landscape

Clear Wayfinding



JAMES HART EDUCATION CENTER

MUSC
Future of Health Summit
October 26, 2020

- Medical University of South Carolina
- MUSC Health
- MUSC Library
- James H. Hunt
- College of Health, Behavior & Society
- College of Life Sciences
- College of Public Health
- College of Nursing
- College of Business
- College of Education
- College of Arts & Sciences
- College of Engineering
- College of Architecture
- College of Design
- College of Social Work
- College of Law
- College of Veterinary Medicine
- College of Health, Behavior & Society
- College of Life Sciences
- College of Public Health
- College of Nursing
- College of Business
- College of Education
- College of Arts & Sciences
- College of Engineering
- College of Architecture
- College of Design
- College of Social Work
- College of Law
- College of Veterinary Medicine

Research Plaza

Digital storytelling

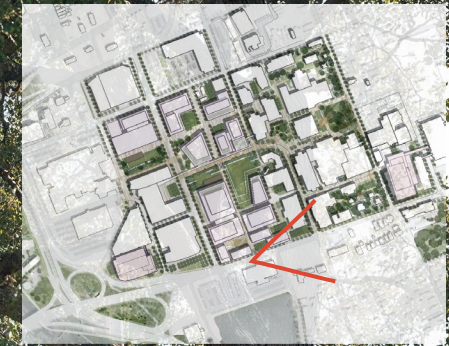


Active Plaza

Collaborative Spaces



Innovation Corridor



Social Spaces

MUSC
Medical University
of South Carolina

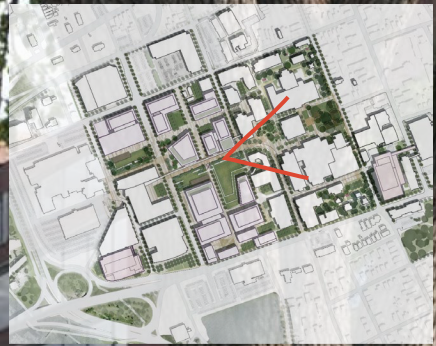
Active Public Realm

Resilient Landscapes

Strengthening Presence



Greenway



Sky Bridge

Interactive Boards

Shaded Pedestrian pathway

Pollinator Garden

Social Spaces



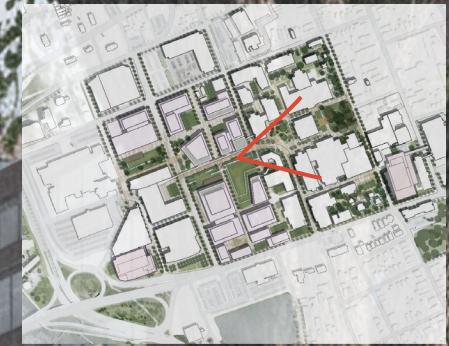
Multi-functional Plaza

Stone Bench

Bio-Retention ponds

Lawn /
Temporary Detention pond

Greenway – During Storm Events



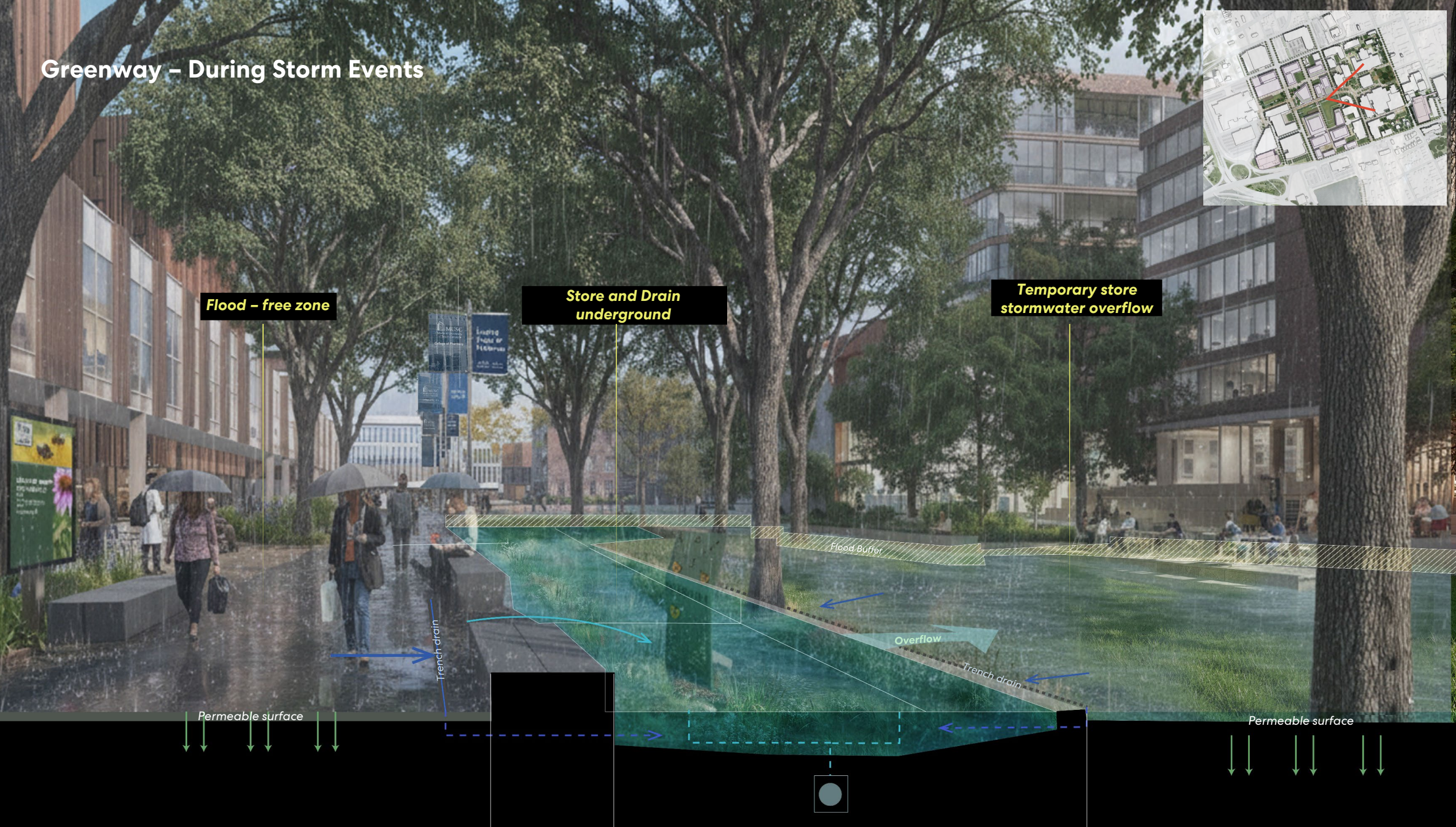
Flood-free zone

Store and Drain underground

Temporary store stormwater overflow

Permeable surface

Permeable surface



Resiliency Planning —

ADAPTING WITH THE WATERS

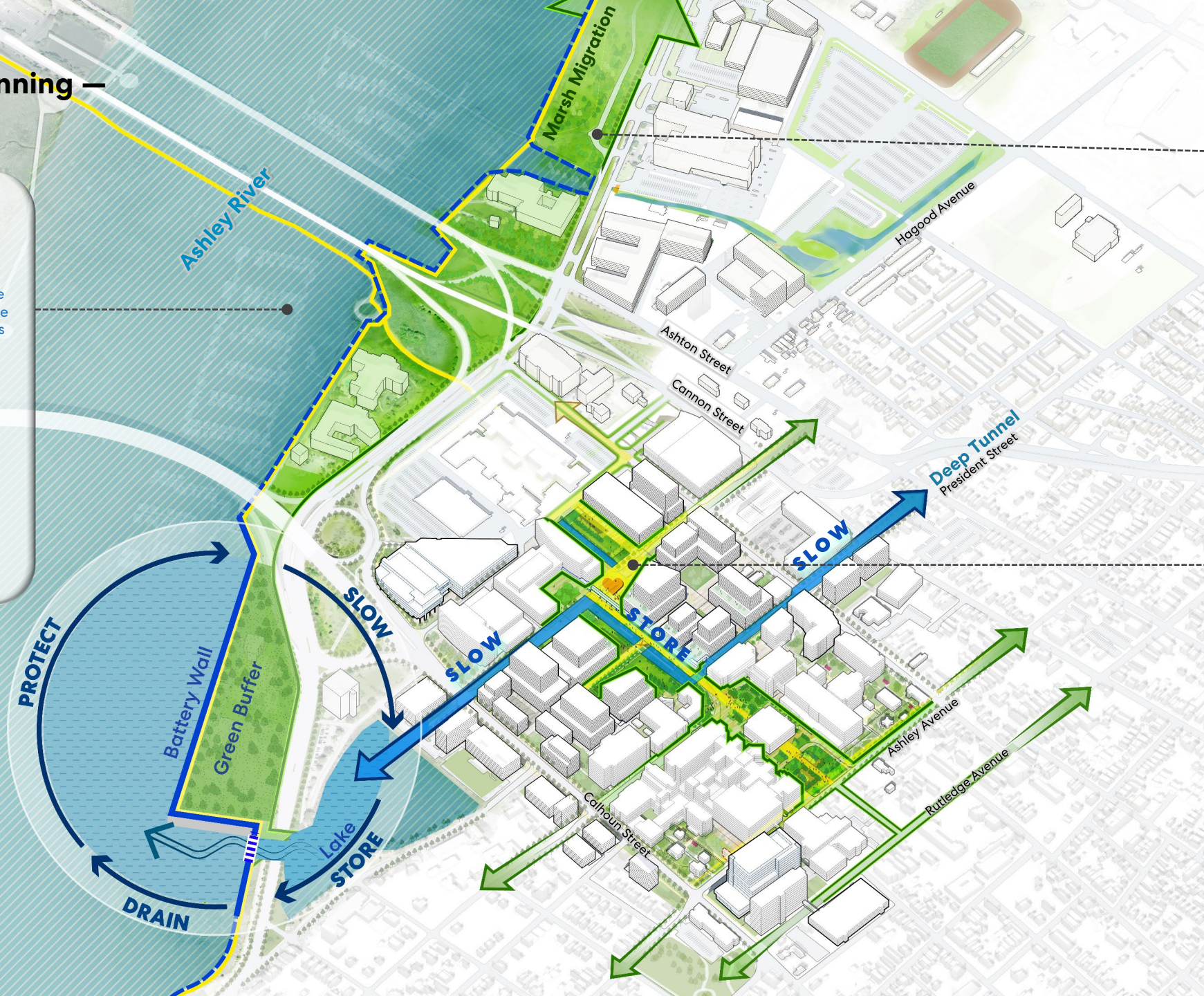
- SLOW**
Rain Garden, Bioswale
Green Roof, Permeable
paving & Tree Trenches
- STORE**
Sunken Courtyards,
Green open spaces,
Underground tanks
- DRAIN**
Deep Tunnel System,
Stormwater Pump
Stations
- PROTECT**
Battery Wall
Extension, Living
Shoreline

ENHANCING THE ENVIRONMENT

- INCREASE IN BIODIVERSITY**
Pollinator Corridors,
Native Flora & Fauna
Communities
- COOLING**
Shade Canopy
Expansion, Pocket
Groves
- CELEBRATING HERITAGE**
Campus Arboretum,
Heritage Trees &
Gardens
- REGENERATION**
Healthy Soil & Plants,
Invasive Plants Removal

SUPPORTING WELL-BEING

- WALKABILITY**
Pedestrian Corridors,
Shaded Walks, Clear
wayfinding
- FOOD ACCESS**
Healthy Food Options,
Community Vegetable
Gardens
- MULTI-MODAL CONNECTIONS**
Bike Path & Public Transit
connections
- HEALING SPACES**
Sensory Planting,
Waiting Gardens



Aerial - Proposed



Ashley River

Lockwood Drive

Bee Street

Cannon Street

Bravo Street

Courtenay Drive

President Street

MOB

Ashley River Tower

Shawn Jenkins Children's Hospital

CHP D

COM

Doughty Street

Basic Science Building

Colcock Hall

Calhoun Street

Library

University Hospital

Hollings Cancer Center

Ashley Avenue

CCH

Rutledge Tower

Rutledge Avenue